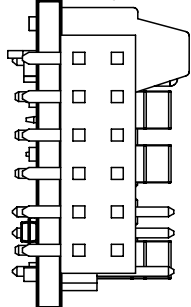
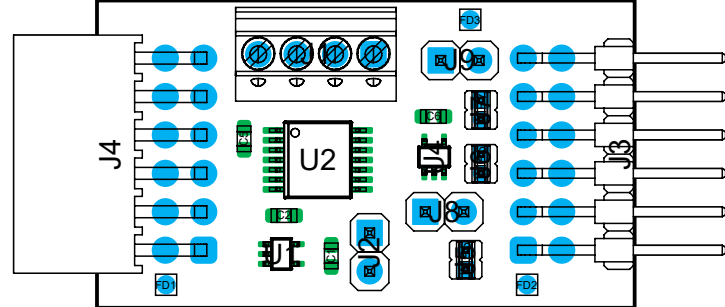


View from Back side (Scale 2:1)

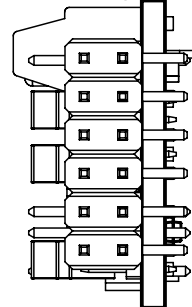
View from Left side (Scale 2:1)



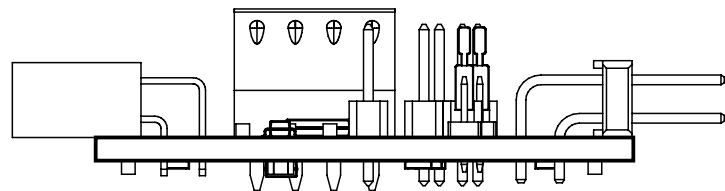
View from Top side (Scale 2:1)



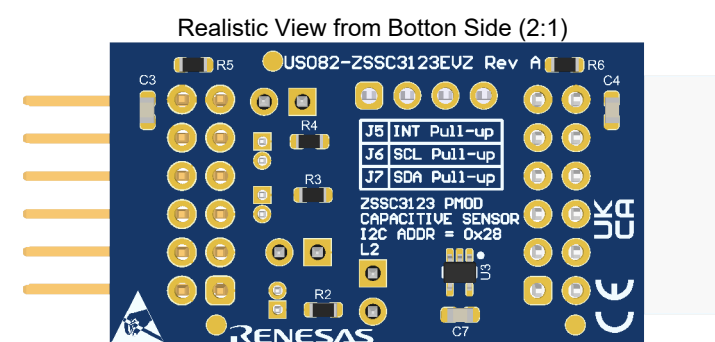
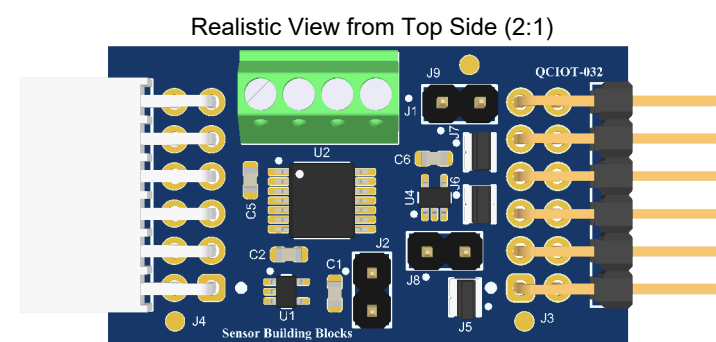
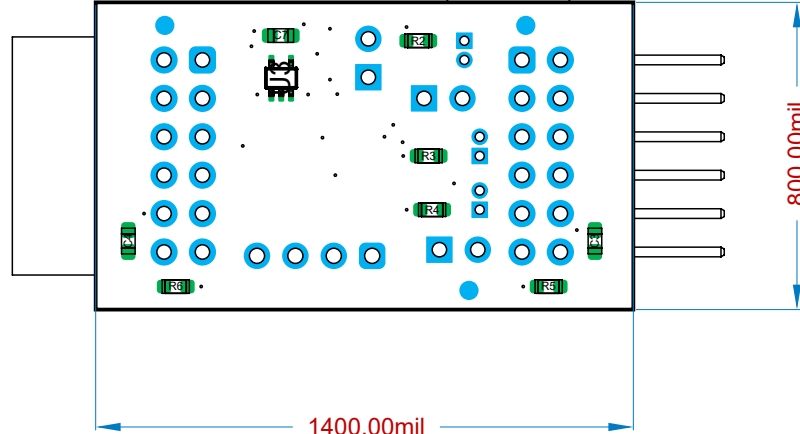
View from Right side (Scale 2:1)



View from Front side (Scale 2:1)



View from Bottom side (Scale 2:1)




Assembly Notes

1. Assemble to J-STD-001.
Workmanship and inspection to IPC-A-610 Class 2.
2. All assembly materials must be RoHS compliant.
(RoHS 3, EU Directive 2015/863)
3. PCB shall comply with IPC-5704 cleanliness requirements.
4. Parts identification is described in parts list BOM.
Parts not to be populated are called out as DNP in parts list BOM.
5. Assembly type: Mixed
Single-sided through hole plus single-sided surface mount.
6. These assemblies are ESD sensitive.
ESD precautions must be observed.
7. These assemblies must be clean and free of flux and all contaminants.
Use of no-clean flux is unacceptable.

THE INFORMATION CONTAINED IN THIS DRAWING IS THE SOLE PROPERTY OF RENESAS. ANY REPRODUCTION IN PART OR AS A WHOLE WITHOUT THE WRITTEN PERMISSION OF RENESAS IS PROHIBITED.

PROPRIETARY AND CONFIDENTIAL

UNLESS OTHERWISE SPECIFIED:		NAME	DATE		
DIMENSIONS ARE METRIC TOLERANCES: FRACTIONAL ± ANGULAR: MACH ± BEND ± TWO PLACE DECIMAL ± THREE PLACE DECIMAL ±	DRAWN	HVR	11/6/2024	710 Slater Rd Morrisville Suite 200 NC 27703	
	CHECKED	KK	6/14/2023		
	ENG APPR.				
	MFG APPR.				
INTERPRET GEOMETRIC TOLERANCING PER:	Q.A.			TITLE QCIOT-ZSSC3123EVZ PMOD ASSEMBLY	
MATERIAL	COMMENTS:			SIZE DWG. NO. REVISION C QCIOT-ZSSC3123EVZ A	
FINISH					
DO NOT SCALE DRAWING				SCALE: 1:1 SHEET 1 OF 1	

DO NOT SCALE DRAWING